



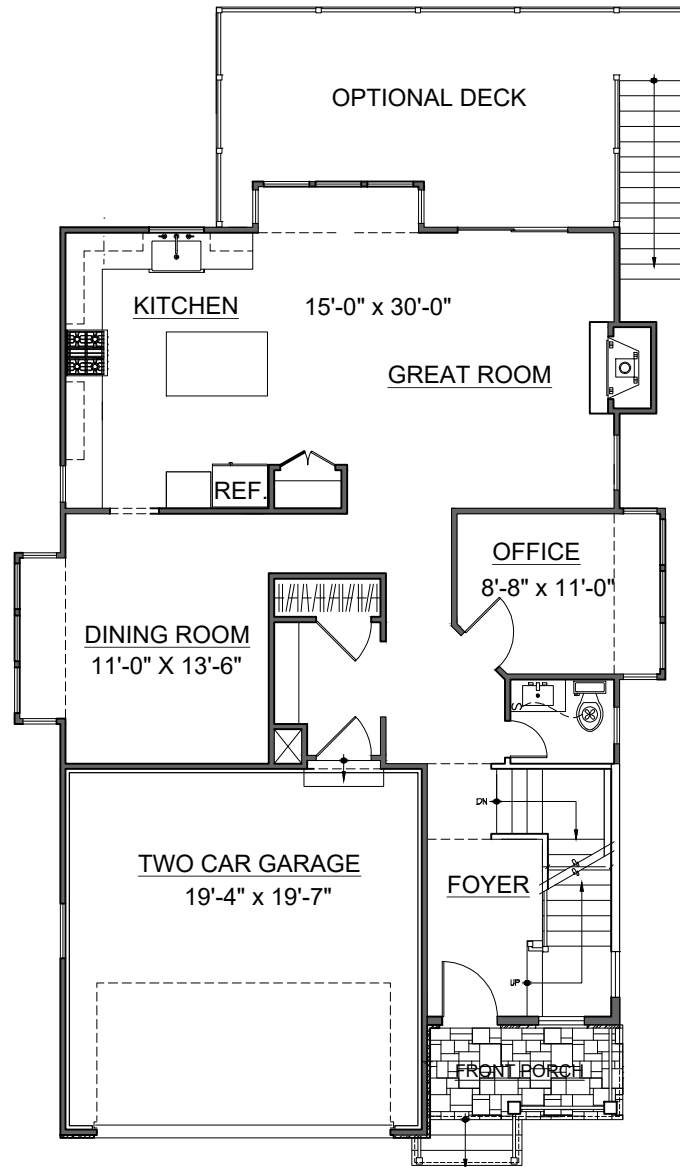
FORT HUNT MODEL

Elevation A



FORT HUNT MODEL

Elevation B



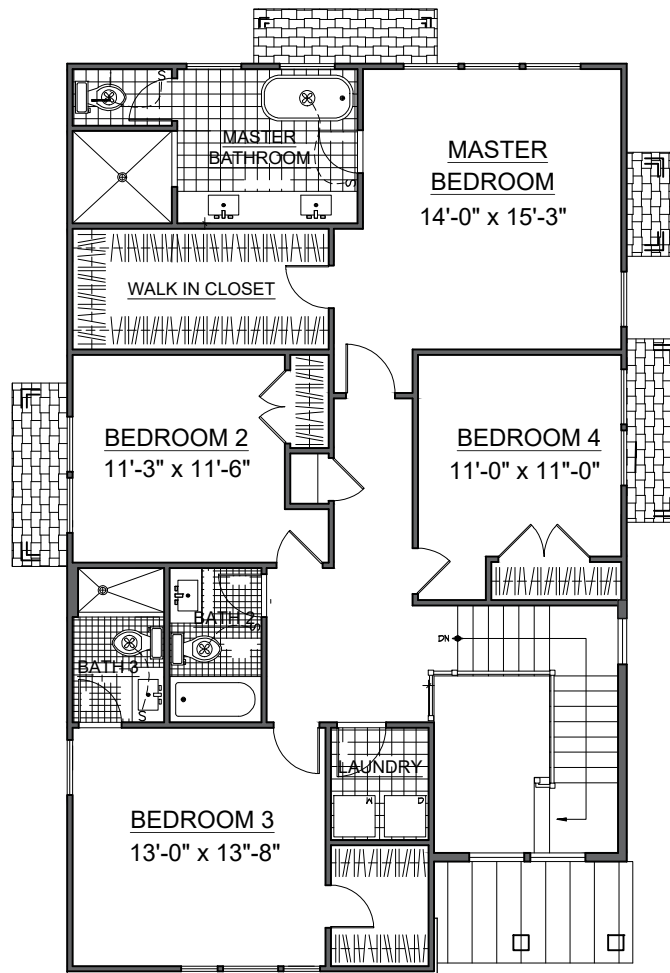
FIRST FLOOR PLAN

FORT HUNT MODEL - ELEVATION A



A Genuario Company
Builders for Generations

Details and dimensions shown on these floor plans are approximate and subject to change. Illustrations are concepts and may vary in detail from plans and specifications. 5/20



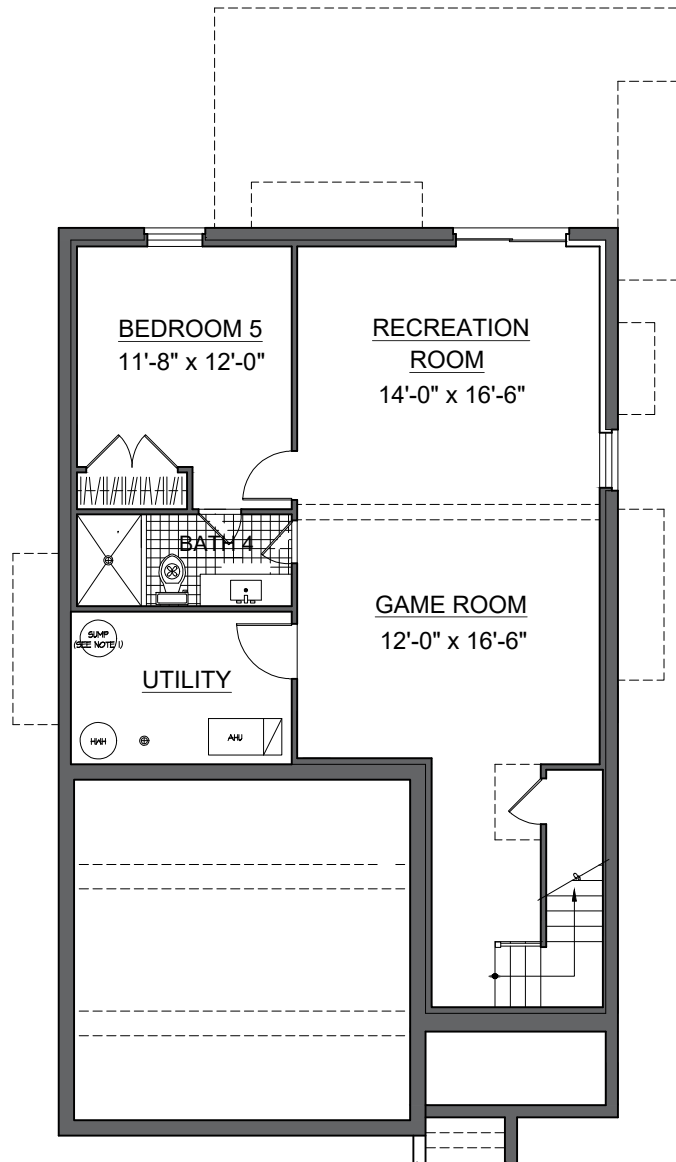
SECOND FLOOR PLAN

FORT HUNT MODEL - ELEVATION A



A Genuario Company
Builders for Generations

Details and dimensions shown on these floor plans are approximate and subject to change. Illustrations are concepts and may vary in detail from plans and specifications. 5/20



BASEMENT PLAN

FORT HUNT MODEL - ELEVATION A



A Genuario Company
Builders for Generations

Details and dimensions shown on these floor plans are approximate and subject to change. Illustrations are concepts and may vary in detail from plans and specifications. 5/20



Hollin Hall Village Lots 1 & 2
8128 & 8126 Fort Hunt Road
INCLUDED FEATURES LIST

EXTERIOR FEATURES:

- Partial Stone Veneer Front Elevation & Foundation Front with Vinyl Siding
- Flagstone Paved Front Stoop with Concrete Lead-walk to Driveway
- Fiberglass Front Door
- 30-year Fiberglass/Asphalt Dimensional Shingles
- Public Sewer and Water
- Front and Rear Hose Bibs; Front and Rear Weatherproof Electrical Outlets
- Decorative Wood Exterior Trim
- Professional Landscape Package and Hydro-seeded Lawn
- Walk-out Basements

INTERIOR FEATURES:

- High 1st Floor & Basement Ceilings (9'-0"); 2nd Floor Ceilings (8'-0")
- Family Room Direct Vent Gas Prefabricated Fireplace
- Media Package: 4 Multi Media Outlets and 2 additional Telephone Outlets (CAT-5)
- 200 amp Electrical Service w/ Smoke Detectors on Each Floor and Each Bedroom
- Finished Basement Recreation Room, Bedroom & Full Bath
- Two Car Garage with Finished Drywall Interior Walls (painted)
- Traditional Oak Main Stair with Painted Railings
- Wide-Plank Acacia Engineered Flooring in Foyer, Office, Dining Room, Kitchen/Breakfast Room, Great Room, Powder Room, Hallways & Master Suite
- Two-panel Interior Doors
- Wall to Wall Carpeting in Secondary Bedrooms and Finished Basement Rec Room & Bedroom
- Upgrade Carpet and Upgrade Carpet Pad (Opt. 1 Carpet & ½" Carpet Pad)

TRIM FEATURES:

- Upgrade 5-¼" Base & 3-¼" Casing throughout
- Two Piece Crown Molding in Foyer, Office, Dining Room & 2nd Floor Hall

BATHROOM FEATURES:

- Maple Wood Vanity Cabinets with Cultured Marble Tops in Secondary Bathrooms
- Traditional Pedestal Sink in Powder Room with Moen Gibson Chrome Faucet
- Ceramic Tile Floors and Subway Tile Tub/Shower Surrounds in Secondary Baths
- Elongated Watersaver Toilets with Chrome Fixtures
- Moen Gibson Chrome Finish Faucets in All Bathrooms
- Large Format Tile, Group 1 Quartz Countertops, Kohler Soaking Tub & Glass Shower Door in Master Bathroom

KITCHEN FEATURES:

- 42" Painted Maple Cabinets
- Quartz Countertops - Group 1
- G.E. 30" Gas Range & Wall Mount Vent Hood
- G.E. Self Cleaning 30" Wall Oven with separate Built-in Microwave
- G.E. Potscrubber Dishwasher
- G.E. 23 c.f. Counter-Depth Refrigerator with Icemaker
- Stainless Steel Single Bowl Kitchen Sink with Moen Kaden Pulldown Faucet
- Tile Flooring in the Mud Room & Laundry Room
- Designer and Recessed Lighting

ENERGY SAVING FEATURES:

- Vinyl Double Hung Tilt Insulated Glass Windows with grilles between the glass
- Insulated Full View Glass Metal Terrace Door
- Airguard Wall Treatment
- R-15 Exterior Wall and R-11 Basement Wall Insulation
- R-38 Attic Insulation
- Two Zone Heating (Gas & Heat Pump) and Electric Cooling (AC) System
- 75 Gallon Gas Water Heater

BUILDER'S TEN YEAR WARRANTY PROGRAM